



International Executive Committee Updates

Fall 2021

Kappa Psi Vision - Mission - Values

- ▶ Vision
 - ▶ Leaders in Pharmacy, Excellence in Life
- ▶ Mission
 - ▶ To develop leaders with a passion for service to their community while creating lifelong personal and professional connections
- ▶ Values
 - ▶ Industry
 - ▶ Sobriety
 - ▶ Fellowship
 - ▶ High Ideals

International Executive Committee / Central Office Updates

- ▶ A guide to assist with plans for the start of a new school year has been developed. The [Returning to Campus Guide 2021](#) can be found on the Kappa Psi website under the ‘Brothers’ section kappa-psi.com/brothers
 - ▶ It includes sections on upcoming events, chapter operations, ritual, and rushing/pledging.
- ▶ The Second Annual Kappa Psi International Service Week was recently held the first full week of October (Oct 3-9, 2021)
 - ▶ You can still submit a record of your activities [Submit 2021 Service Week Activities](#)
 - ▶ Send any pictures or information to share to the philanthropy committee at philanthropy@kappapsi.org and THE MASK at mask@kappapsi.org

International Executive Committee / Central Office Updates

- ▶ A new Social Media Coordinator position was approved to assist with Fraternity communications. The application process and details of the position will be released shortly.
- ▶ Follow Kappa Psi on social media
 - ▶ On Instagram - [kappapsi](#)
 - ▶ Test your Kappa Psi knowledge with Trivia Tuesday stories
 - ▶ Learn about our service efforts with Philanthropy Friday posts
 - ▶ Submit your chapter's info to be highlighted at socialmedia@kappapsi.org
 - ▶ On Facebook with a public page and a private group
 - ▶ On YouTube - [Kappa Psi Pharmaceutical Fraternity, Inc.](#)
 - ▶ On Twitter - @kpsi
 - ▶ New on LinkedIn Groups - [Kappa Psi Pharmaceutical Fraternity, Inc.](#)

International Executive Committee / Central Office Updates

- ▶ The GCD Development and Publications committees have developed an updated [GCD Manual](#) that can be found on the website.
 - ▶ This manual and other references for GCDs can be found at kappa-psi.com/gcd
- ▶ Previously planned in person chapter visitations were placed on hold due to COVID-19 restrictions at Universities. We are now scheduling new visits and preparing to offer virtual visits this year.
 - ▶ If you are interested in a chapter visitation to assist your chapter, please send a request with contact information for the Regent and GCD to grandregent@kappapsi.org

International Executive Committee / Central Office Updates

- ▶ Diversity, Equity and Inclusion (DEI) Training.
 - ▶ DEI training is available at no cost to our members through the Professional Fraternity Association.
 - ▶ Phase 1 of the PFA DEI Initiative (DEII) asks us to start with ourselves and explore unconscious bias.
 - ▶ Through the DEII, Kappa Psi Brothers have access to the Harvard Implicit Bias Assessments.
 - ▶ The selections through the PFA program assess unconscious bias in race, gender, career, and age.
- ▶ To participate in phase 1 of the PFA DEII, visit dei.professionalfraternity.org/exploring-unconscious-bias.
- ▶ The access code you need that is unique to Kappa Psi is: prize

International Executive Committee / Central Office Updates

- ▶ All chapters receive 20 print copies of THE MASK. If your chapter needs additional copies contact the Editor of THE MASK, Cameron Van Dyke, at mask@kappapsi.org to have additional copies added in the future
- ▶ Share extra copies with faculty, the Dean's office, prospective new members and others interested in learning about Kappa Psi
- ▶ Sign up for the digital copy kappapsimask.com



International Executive Committee / Central Office Updates

- ▶ Save the Date! The 60th Grand Council Convention will be July 17-21, 2022
 - ▶ Due to the postponement of the 60th GCC, subsequent Grand Council Conventions will move to even years
- ▶ The Arizona Grand Resort & Spa in Phoenix, Arizona will remain the site for the 60th GCC
- ▶ Arizona Grand Resort & Spa
 - ▶ All the rooms are suites
 - ▶ **THERE IS AN ON-SITE WATERPARK!**
 - ▶ With slides!
 - ▶ And 6 other pools
 - ▶ Lots of good food and shopping close



International Executive Committee / Central Office Updates

- ▶ Finances and Taxes
 - ▶ Taxes for chapters and provinces should be filed annually
 - ▶ Best to file early to allow adequate time for resolution of concerns and to ensure appropriate filing for awards consideration
 - ▶ Contact the Grand Counselor with questions (grandcounselor@kappapsi.org)
- ▶ Alternatives to Venmo
 - ▶ [Givebutter.com](https://www.givebutter.com) is an authorized vendor of Venmo and the platform may be used for electronic collection of funds with additional fees.
 - ▶ Zelle is an option without additional fees but is bank dependent

International Executive Committee / Central Office Updates

- ▶ Pledging and our history
 - ▶ Use THE MASK archives to have pledges research your chapter history and chartering
 - ▶ Editions back to 1904 may be found at kappapsiarchives.org
- ▶ Leaders and Legends
 - ▶ Clips of recordings have been posted to social media highlighting our Past Grand Regents
- ▶ Place a copy of your Chapter's historical records/pictures in your Chapter's history folder
 - ▶ Note: only the chapter@kappapsi.org email account may access the history folder
- ▶ Coming Soon ... The Kappa Psi Virtual Museum
 - ▶ Items from the Central Office collection have been scanned (including minutes from the 1902 GCC)
 - ▶ Look through your Chapter/Province history. Submit pictures with description to grandhistorian@kappapsi.org (e.g. historical composites/photos, documents, etc)

International Executive Committee / Central Office Updates

- ▶ An official pledge education process was recently approved for use in new Kappa Psi chapters. This material is also available for any chapter to use if desired.
- ▶ The [pledge educational outline](#) can be found on the website under the 'Collegiate Resources' page kappa-psi.com/collegiate
- ▶ Contact Grand Ritualist Nardolillo at grandritualist@kappapsi.org for a copy of the education slides or with any questions on pledging or initiation.
- ▶ Pledging and Rushing looks different than usual for the majority of chapters
- ▶ [Share your ideas](#) for successful virtual or COVID modified events so others can learn from your chapter
- ▶ [Find rushing and pledging ideas](#)

International Executive Committee / Central Office Updates

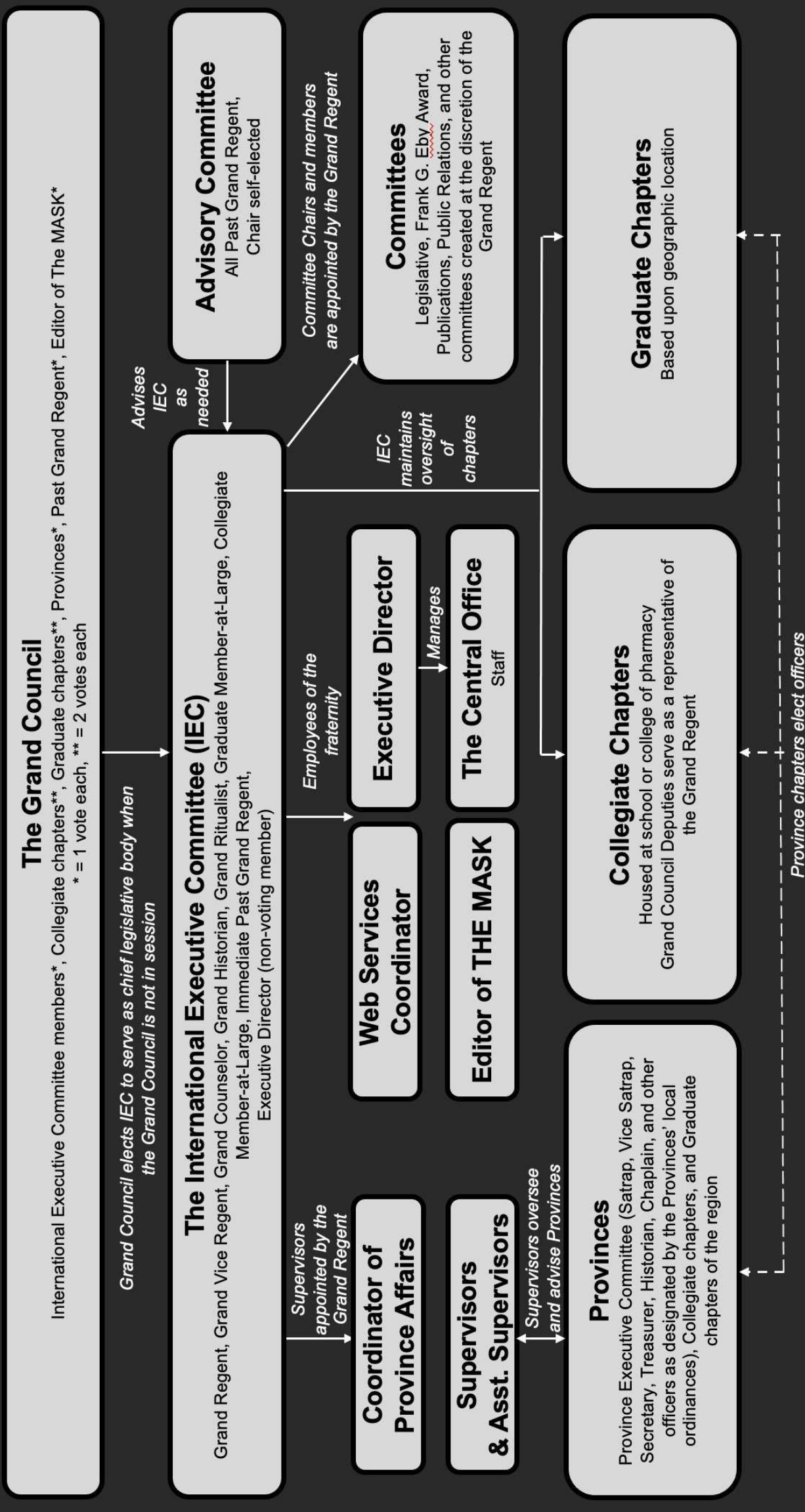
- ▶ Keep up with your Chapter responsibilities to the Central Office
 - ▶ Chapter Rosters - Due October 15
 - ▶ Dues for Collegiate Chapters - Due Oct 15
 - ▶ Submit Officer Rosters now and after next elections
- ▶ Looking to keep up on deadlines and stay in the loop?
 - ▶ Sign up for reminder text alerts kappa-psi.com/texting
 - ▶ Find deadlines on the website kappa-psi.com/due-dates
- ▶ Questions?
 - ▶ Central Office at centraloffice@kappapsi.org or call 972-479-1879
 - ▶ Graduate Member-at-Large Kabisatpathy gmatlarge@kappapsi.org
 - ▶ Collegiate Member-at-Large Alex Maciejewski collatlarge@kappapsi.org

International Executive Committee / Central Office Updates

- ▶ Voluntary Graduate Dues can be paid on the web site in the Kappa Psi Store (kappa-psi.com/store)
 - ▶ Dues breakdown: \$10 to GCC fund, \$40 to General fund
- ▶ Become a member of **Society 1879** and receive special benefits once you've donated at least \$1879 dollars to the Fraternity in graduate voluntary dues
- ▶ Brothers moving or wishing to connect with a graduate chapter should complete the Graduate Chapter Referral form
 - ▶ kappapsi.com/grad-referral-form

Kappa Psi Organizational Structure

Kappa Psi Pharmaceutical Fraternity, Inc.



Kappa Psi Strategic Plan 2016-2021

- ▶ Strategic Goals
 - ▶ Collegiate Chapters and Members
 - ▶ Develop and strengthen our Collegiate Chapters and nourish lifelong opportunity
 - ▶ Graduate Chapters and Members
 - ▶ Enhance alumni engagement through professional development and leadership
 - ▶ Programs and Services
 - ▶ Promote opportunities for professional growth
 - ▶ Public Relations
 - ▶ Promote awareness of Kappa Psi to the community and the profession
 - ▶ Fraternity Operations
 - ▶ Optimize the resources and infrastructure to best support our membership
- ▶ Find more detailed information on the website
 - ▶ kappapsi.com/strategic-plan